

# Charger Diagnostic Tool for *c-Go* charger and *c-Go //* charger

## Read out *c-Go //* charger by Bluetooth dongle

① Download and install the CDT software to Pc/laptop.



② Connect the Bluetooth dongle to PC/laptop

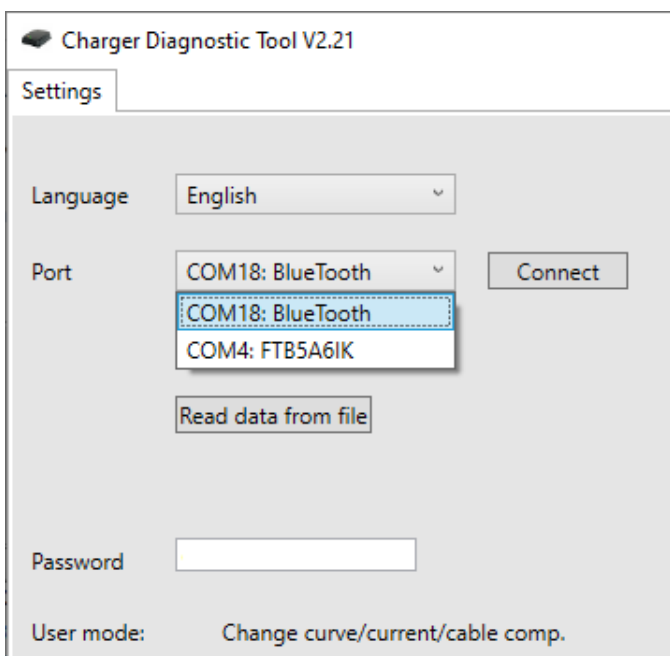


③ Connect the charger to the mains

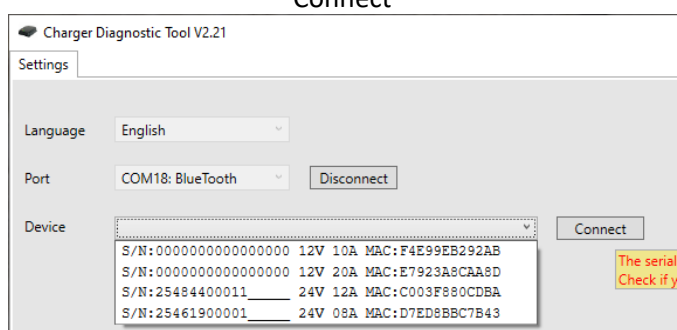


④ Start the CDT software.

⑤ Select the Bluetooth port and click Connect



⑥ Select the charger you want to connect to and click Connect



*c-Go //* charger



⑦ Under the Device information/Charge curve/Cumulative tab you will find various data

Charger Diagnostic Tool V2.21

Settings Device information/Charge curve/Cumulative Charge history Real time measurements

Device information

Software version c-Go2 V2.20 Nov 3 2025 Nominal voltage 24V

Serial Number 25461900001 Max. current 8A

Charge curve

Charge current 8A

Charge curve Gel-combcurve

Cable compensation (mΩ) 20

Cumulative data

Hours charging 221 Cycles started 11 Charged Ah 26

Cycles completed 3 Deep discharges 0

Cycles interrupted 8 Contact problems 0

⑧ Under the Charge history tab you can see the last 1024 charging cycles

Charger Diagnostic Tool V2.21

Settings Device information/Charge curve/Cumulative Charge history Real time measurements

No.	Cycle time	Voltage	Current	U-PWM	Charger temperature	Ah	Cycle state	Completed	Error	Deep discharge	Contact problem
1	0:00	12.7V	0.0A	87%	28°C	0Ah	Bulk	No	Control loop	-	-
2	0:00	12.7V	11.7A	61%	27°C	0Ah	Bulk	No	Control loop	-	-
3	0:02	14.3V	0.1A	79%	27°C	0Ah	Post Charge	Yes	--	-	-
4	0:00	0.0V	0.0A	78%	26°C	0Ah	Bulk	No	--	-	-
5	0:04	14.4V	0.1A	79%	26°C	0Ah	Post Charge	Yes	--	-	-
6	0:04	13.3V	6.5A	74%	75°C	1Ah	Bulk	No	Temperature high	-	-
7	0:00	13.2V	0.0A	72%	-21°C	0Ah	Float	Yes	Temperature low	-	-
8	0:06	13.2V	0.0A	0%	21°C	0Ah	Float	Yes	--	-	-
9	0:00	13.4V	8.7A	75%	23°C	0Ah	Float	Yes	--	-	-
10	0:00	13.4V	10.1A	78%	24°C	0Ah	Bulk	No	--	-	-
11	12:16	13.4V	10.0A	75%	54°C	126Ah	Bulk	No	Too many Ah charged	-	-
12	0:00	0.0V	0.0A	0%	25°C	0Ah	Float	Yes	--	-	-
13	18:08	13.1V	0.0A	72%	28°C	0Ah	Float	Yes	--	-	-
14	23:28	14.4V	0.2A	79%	43°C	11Ah	Absorption	Yes	--	-	-
15	1:04	8.9V	5.9A	50%	41°C	0Ah	Float	Yes	Current too high	-	-
16	1:16	0.0V	10.4A	72%	36°C	0Ah	Float	Yes	Current too high	-	-
17	3d 17:36	13.1V	0.0A	72%	36°C	0Ah	Float	Yes	--	-	-

Print data

Erase all data



- ⑨ If the correct password is entered in the Settings tab, the charge curve and charge current of the charger can be changed

Charger Diagnostic Tool V2.21

Settings Device information/Charge curve/Cumulative

Device information

Software version c-Go2 V2.20 Nov 3 2025

Serial Number 0000000000000000

Charge curve

Charge current 5A

Charge curve Gel-combcurve

Cable compensation (mΩ) Gel-combcurve

Cumulative data

Hours charging

AGM

AGM-IU 2.45V/c

Li-ion 3.65V/c

Li-ion 3.60V/c

PowerSupply Gel

PowerSupply AGM

Custom

“Change curve/current/cable comp.” will send the changes to the charger.

Change curve/current/cable comp.

# Read out *c-Go* charger with USB-serial cable

① Download and install the CDT software to Pc/laptop.



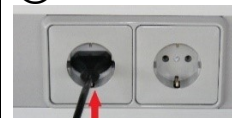
② Connect the USB-serial cable to the PC



③ Connect the USB-serial cable to the *c-Go* charger. **Please note the color sequence**



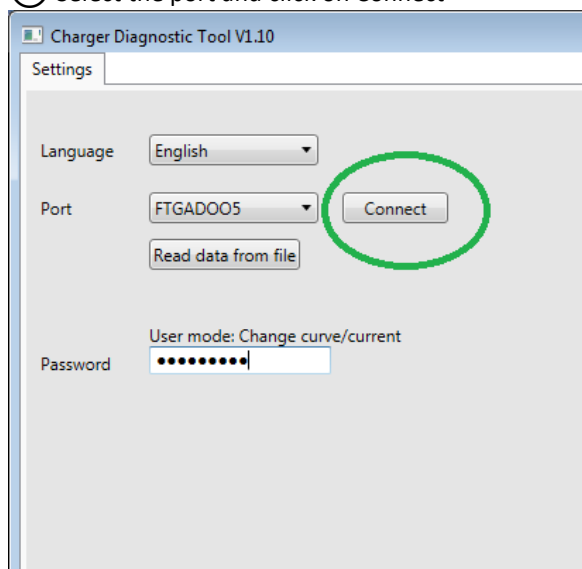
④



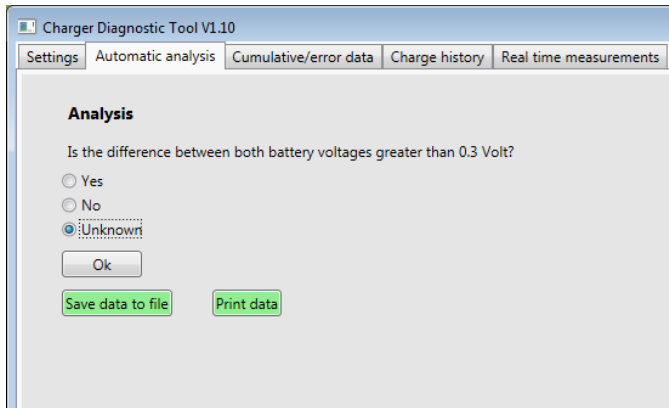
Connect the charger to the mains

⑤ Start the CDT software

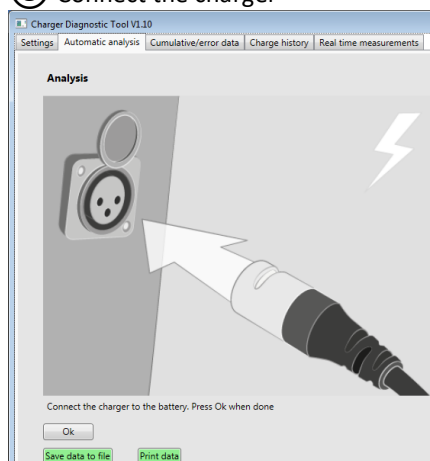
⑥ Select the port and click on Connect



⑦ Select the tab "Automatic analysis". Answer the question and click on Ok.



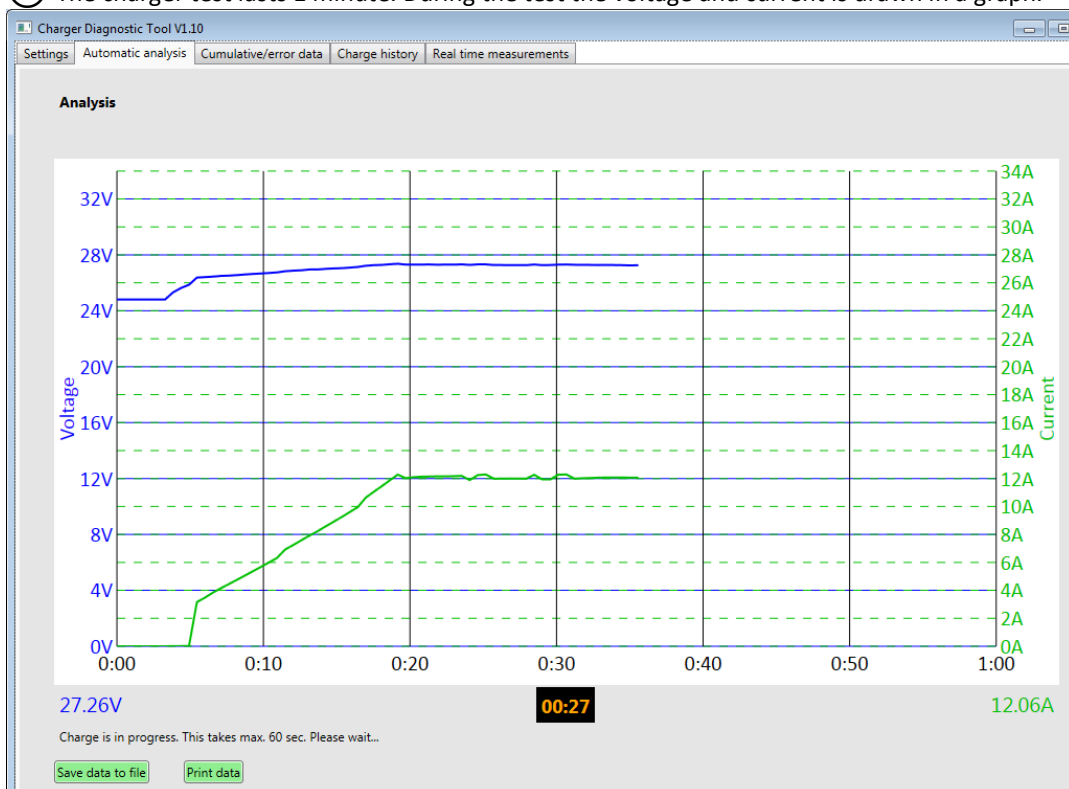
⑧ Connect the charger



*c-Go* charger



⑨ The charger test lasts 1 minute. During the test the voltage and current is drawn in a graph.



⑩ After 1 minute the conclusions are displayed, containing warnings

**Charger Diagnostic Tool V1.10**

Settings Automatic analysis Cumulative/error data Charge history Real time measurements

**Conclusions**

- Replace the charger
- The user should charge after every use to prevent deep discharge
- The user should not interrupt the charge
- Condition of the battery is unknown

Save data to file Print data

⑪ Or without warnings

**Charger Diagnostic Tool V1.10**

Settings Automatic analysis Cumulative/error data Charge history Real time measurements

**Conclusions**

- No problems detected at the charger
- No user errors detected
- Condition of the battery is unknown

Save data to file Print data

⑫ At the tab Cumulative/error data, the cumulative data and error history is displayed

**Charger Diagnostic Tool V1.10**

Settings Automatic analysis Cumulative/error data Charge history Real time measurements

Software version: c-Go 24V,12A->10A B1.22 15122015 Nominal voltage: 24V Max. current: 12A

Power ups: 8 Cycles started: 31 Charged Ah: 652 Charge current: 10

Hours standby: 230 Batt. disconnected: 12 Deep discharges: 8 Charge curve: AGM

Hours charging: 98 Mains disconnected: 2 Contact problems: 0 Voltage cal. value: 4

Hours float: 156 Cycles completed: 17 Current cal. value: 22

**Error history**

No.	CycleNr	ChgHours	Cycle time	Cycle state	Voltage	Current	U-PWM	Charger temperature	Error
1	22	98	6:12	Absorption	27.65V	0.00A	71.9%	51.9 °C	Control loop
2	22	98	0:00	Standby	25.60V	4.61A	0.0%	18.8 °C	Current offset high
3	22	98	0:00	Standby	9.73V	4.35A	0.0%	14.5 °C	Current offset high
4	23	98	0:00	Bulk	22.53V	0.22A	71.9%	20.1 °C	Control loop
5	31	98	0:00	Standby	10.24V	2.30A	0.0%	20.1 °C	Current offset high
6	0	0	--	--	--	--	--	--	--
7	0	0	--	--	--	--	--	--	--
8	0	0	--	--	--	--	--	--	--
9	0	0	--	--	--	--	--	--	--
10	0	0	--	--	--	--	--	--	--

Save data to file Print data Erase all data

c-Go charger



13 At the tab Charge history up to the last 512 charge cycles are shown

Charger Diagnostic Tool V1.10

Settings Automatic analysis Cumulative/error data **Charge history** Real time measurements

No.	Ah	Cycle time	Voltage	Completed	Error
1	0 Ah	0:00	25.36 V	No	--
2	11 Ah	17:36	32.27 V	Yes	--
3	14 Ah	22:00	32.72 V	Yes	--
4	35 Ah	1d 0:12	29.39 V	Yes	--
5	25 Ah	2:28	29.33 V	No	--
6	24 Ah	6:00	29.39 V	Yes	--
7	26 Ah	4:56	29.39 V	Yes	--
8	16 Ah	3:16	29.39 V	No	--
9	43 Ah	15:24	29.39 V	Yes	--
10	20 Ah	2:00	29.14 V	No	--
11	70 Ah	14:16	29.39 V	Yes	--
12	19 Ah	15:24	29.33 V	Yes	--
13	57 Ah	17:36	29.39 V	Yes	--
14	63 Ah	15:24	29.39 V	Yes	--
15	12 Ah	16:28	29.39 V	Yes	--
16	8 Ah	12:04	31.89 V	Yes	--
17	25 Ah	13:12	31.57 V	Yes	--
18	51 Ah	14:16	29.39 V	Yes	--
19	40 Ah	16:28	29.39 V	Yes	--
20	11 Ah	8:12	32.21 V	Yes	--
21	24 Ah	13:12	31.89 V	Yes	--
22	59 Ah	6:00	29.33 V	No	Current offset high
23	0 Ah	0:04	18.00 V	No	Control loop
24	0 Ah	0:00	18.00 V	No	--
25	0 Ah	0:00	18.00 V	No	--
26	0 Ah	0:00	18.00 V	No	--
27	0 Ah	0:00	18.00 V	No	--
28	0 Ah	0:00	18.00 V	No	--
29	0 Ah	0:00	18.00 V	No	--
30	0 Ah	0:00	18.00 V	No	--
31	0 Ah	0:00	18.00 V	No	Current offset high
32	--	--	--	--	--
33	--	--	--	--	--
34	--	--	--	--	--

Save data to file  
Print data  
Erase all data  
Save data to CSV file

14 If the correct password is entered at the tab Settings, the charge current and curve can be changed

Charger Diagnostic Tool V1.10

Settings Automatic analysis Cumulative/error data **Charge history** Real time measurements

Software version c-Go 24V,12A 2.10 20062017 Nominal voltage 24V Max. current 12A

Power ups 54 Cycles started 0 Charged Ah 0 Charge current 12A

Hours standby 2 Batt. disconnected 0 Deep discharges 0 Charge curve 11A

Hours charging 0 Mains disconnected 0 Contact problems 0 Voltage cal. value 10A

Hours float 0 Cycles completed 0 Current cal. value 9A

8A

7A

Change curve/current

Charger Diagnostic Tool V1.10

Settings Automatic analysis Cumulative/error data **Charge history** Real time measurements

Software version c-Go 24V,12A 2.10 20062017 Nominal voltage 24V Max. current 12A

Power ups 54 Cycles started 0 Charged Ah 0 Charge current 12A

Hours standby 2 Batt. disconnected 0 Deep discharges 0 Charge curve Gel

Hours charging 0 Mains disconnected 0 Contact problems 0 Voltage cal. value Gel

Hours float 0 Cycles completed 0 Current cal. value AGM

AGM-IU

LiFePO4

Change curve/current

c-Go charger

